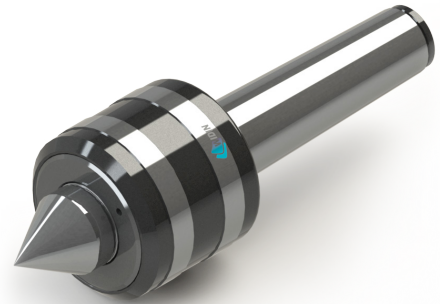
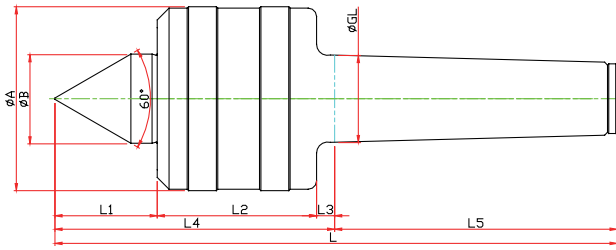


NK-TYPE

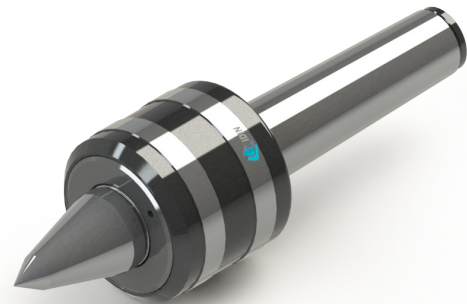
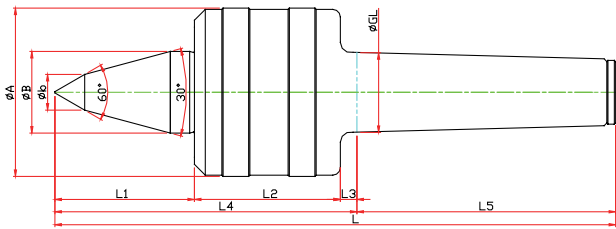
※ 고하중물 전용 센터, 준고속형 Center for heavy duty and Semi High Speed



Model	Order Number	Morse Taper	Dimension									Weight MAX.	R.P.M MAX.	Run Out
			GL	A	B	L1	L2	L3	L4	L5	L			
LC-3NK	020003	NO.3	23,825	52	22	29	42	5	76	80	156	1900	5000	0.003
LC-4NK	020004	NO.4	31,267	66	32	37	57	6.5	100.5	101.5	202	2700	3800	0.003
LC-5NK	020005	NO.5	44,399	80	40	45.5	57	6.5	109	129.5	238.5	3200	3400	0.005
LC-6NK	020006	NO.6	63,348	132	65	65	100	8	173	182	355	10000	1800	0.005
LC-7NK	020007	NO.7	83,058	168	72	84	128	10	222	250	427	17200	1200	0.005

NKB-TYPE

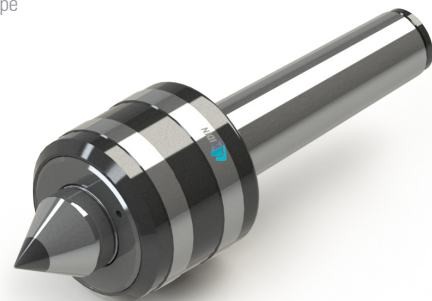
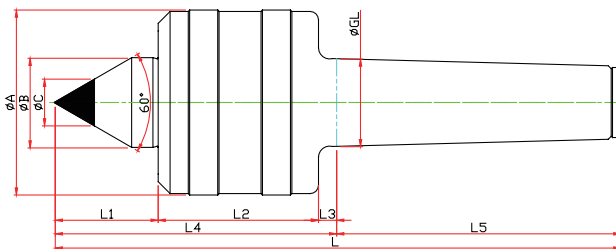
※ SHAFT 확장(바이트 간섭 최소화) SHAFT EXTENSION(Minimize the bite-interference)



Model	Order Number	Morse Taper	Dimension										Weight MAX.	R.P.M MAX.	Run Out
			GL	A	B	b	L1	L2	L3	L4	L5	L			
LC-3NKB	021003	NO.3	23,825	52	22	10	48	42	5	95	80	175	980	5000	0.003
LC-4NKB	021004	NO.4	31,267	66	32	14	53	57	6.5	116.5	101.5	218	1400	3800	0.003
LC-5NKB	021005	NO.5	44,399	80	40	18	65.5	57	6.5	129	129.5	258.5	1900	3400	0.005
LC-6NKB	021006	NO.6	63,348	132	65	25	78	100	8	186	182	368	5100	1800	0.005

NKC-TYPE

※ 초경타입 Carbide Type



Model	Order Number	Morse Taper	Dimension										Weight MAX.	R.P.M MAX.	Run Out
			GL	A	B	L1	L2	L3	L4	L5	C	L			
LC-3NKC	020103	NO.3	23,825	52	22	29	42	5	76	80	10	156	1900	5000	0.003
LC-4NKC	020104	NO.4	31,267	66	32	37	57	6.5	100.5	101.5	14	202	2700	3800	0.003
LC-5NKC	020105	NO.5	44,399	80	40	45.5	57	6.5	109	129.5	18	238.5	3200	3400	0.005
LC-6NKC	020106	NO.6	63,348	132	65	65	100	8	173	182	25	355	10000	1800	0.005